

4

3

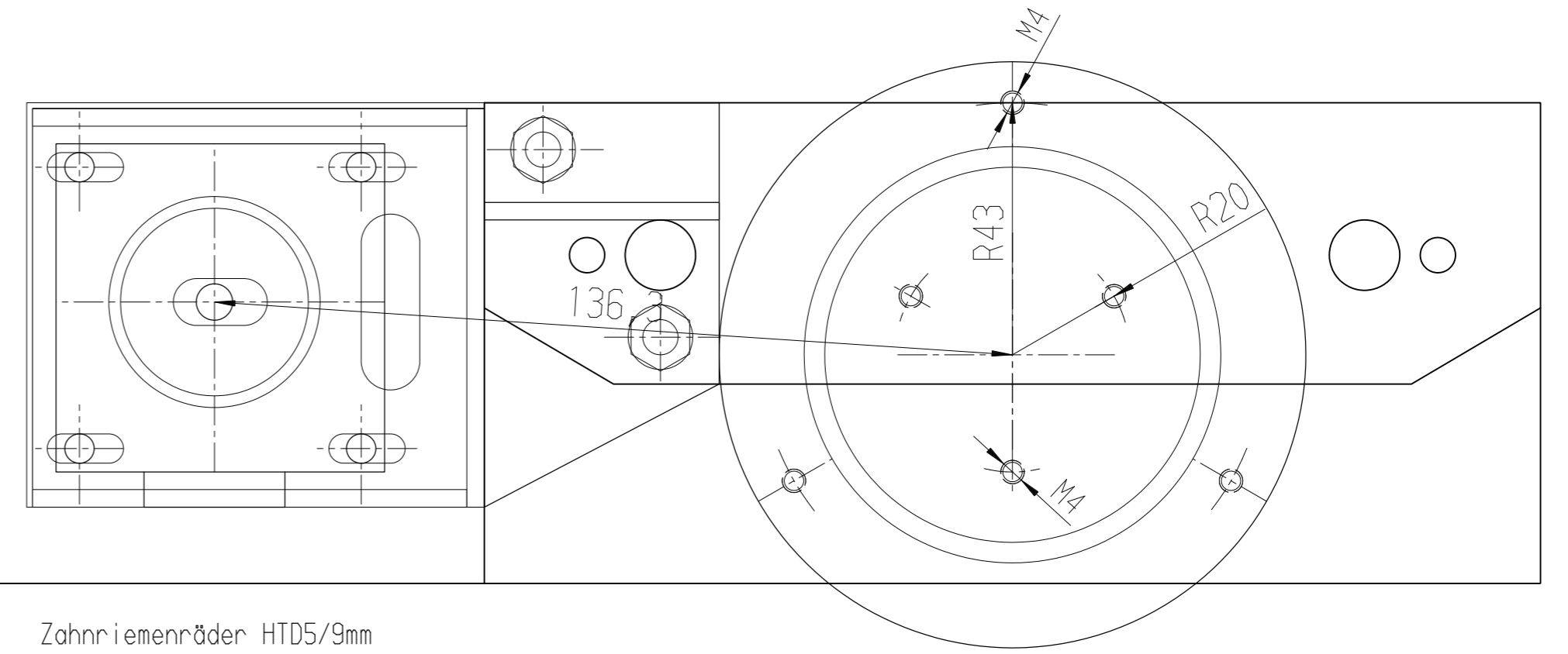
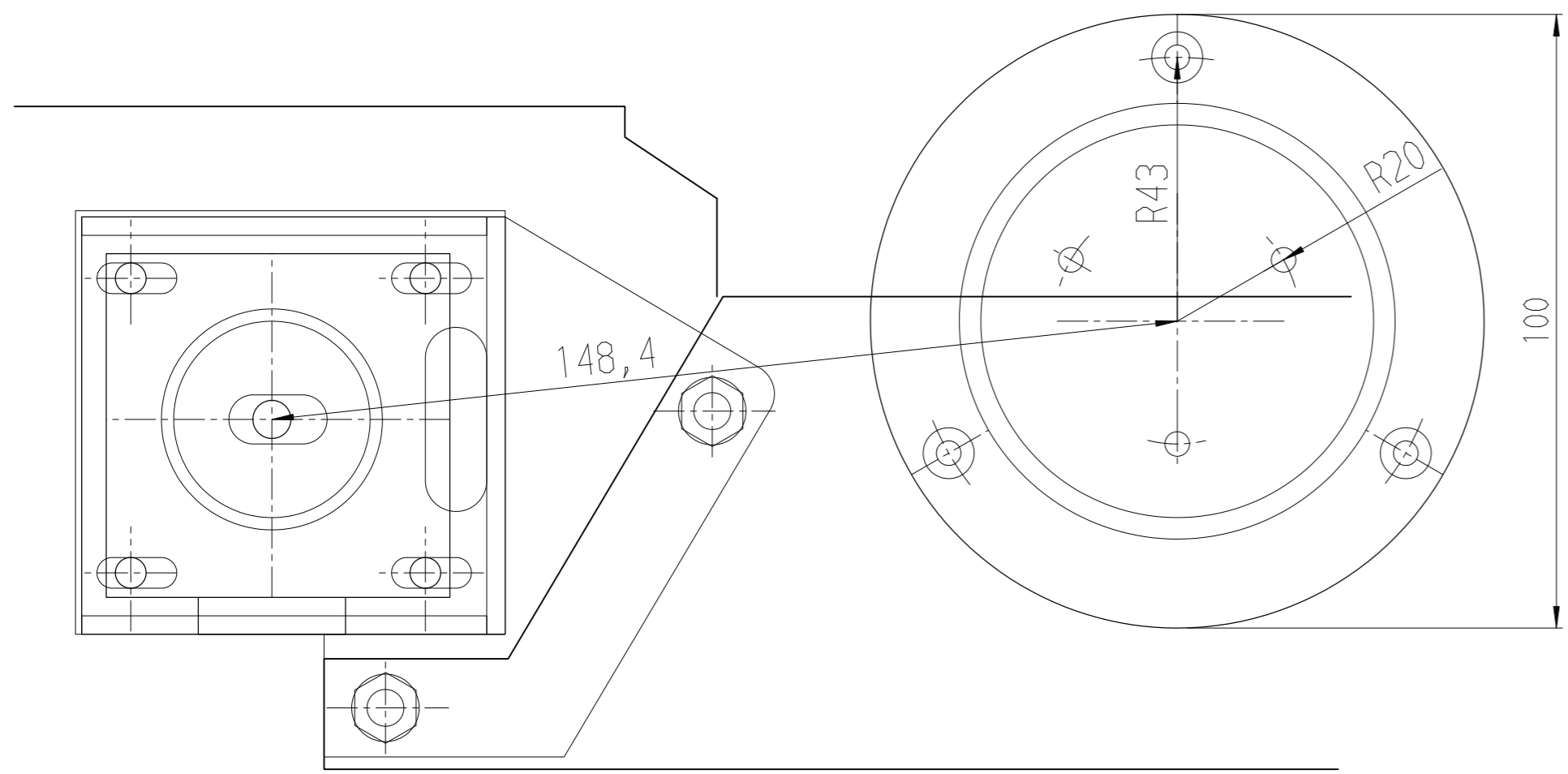
2

1

Änderungs-Index			
REV	Beschreibung	Datum	Freigabe

Verbindungsscheibe
Stahlblech 3mm

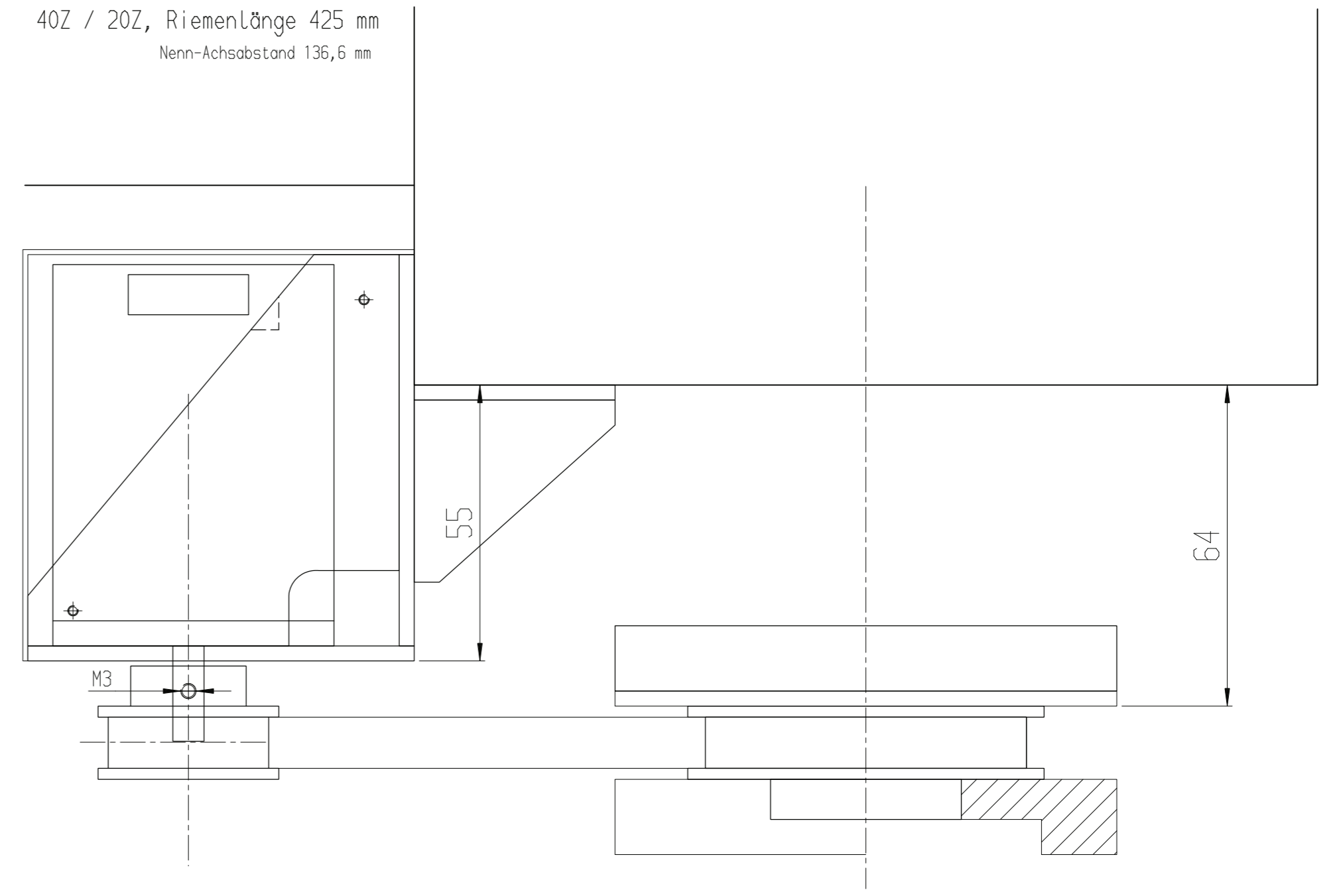
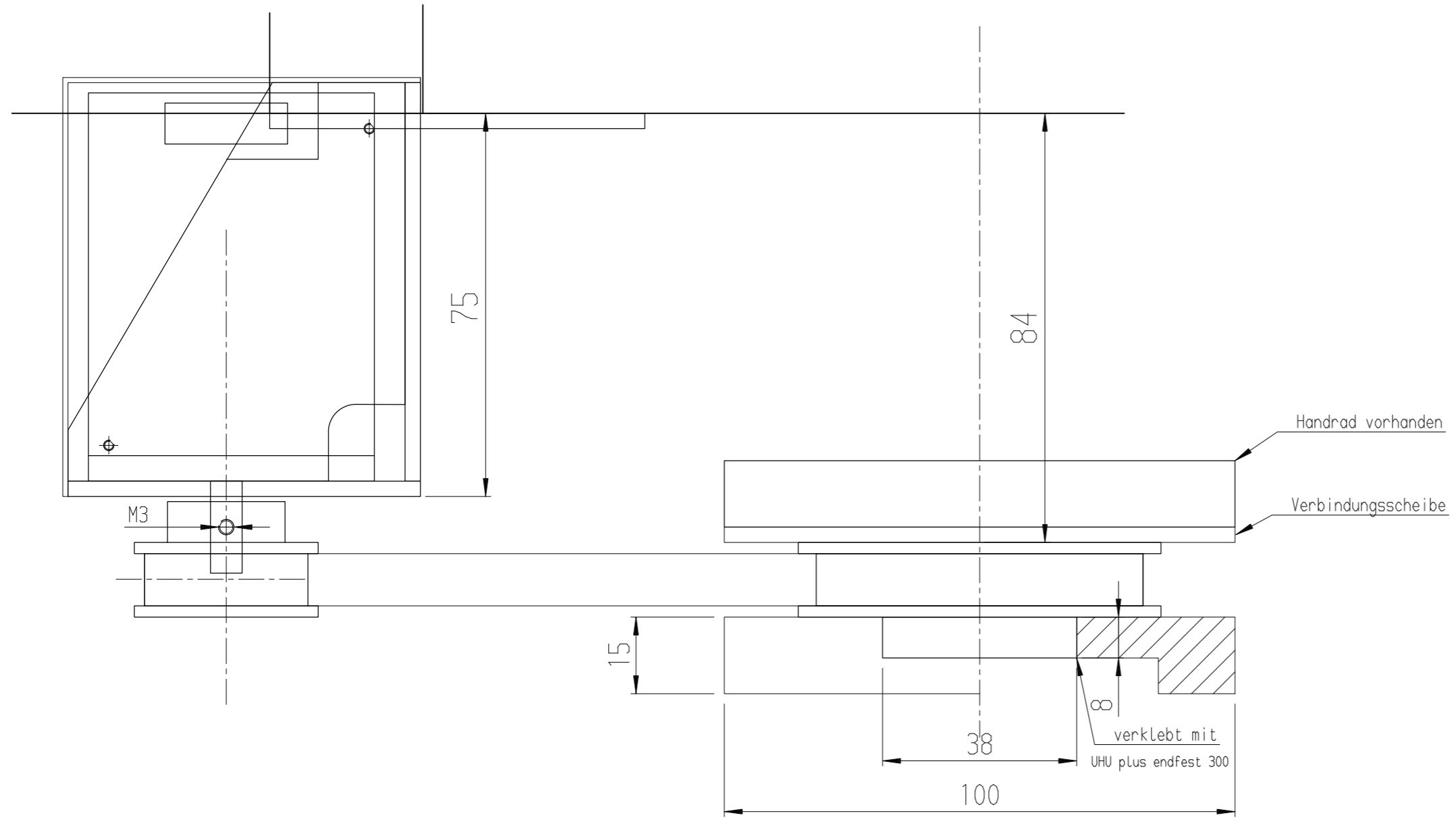
vorhandenes Handrad und Riemenräder



Zahnriemenräder HTD5/9mm (Mädler)
40Z / 20Z, Riemenlänge 450 mm
Nenn-Achsabstand 149,1 mm

Schrittmotore Sanyo Denki 103-H7126-1740 (www.einfach-cnc.de)

Zahnriemenräder HTD5/9mm
40Z / 20Z, Riemenlänge 425 mm
Nenn-Achsabstand 136,6 mm



Handrad neu
Aluminium AlCuMgPb Ø100

MEDUSA₄		Bezeichnung CNC-Umbau BF20	
Bearbeiter S. Brunker	Datum 04-01-2016	PROJEKT P1	DWG Blatt 1
Geprüft	Datum	Maßstab 1:	Version 1 von 1
Name	A2	TYPE M	Blatt 1 von 1

4

3

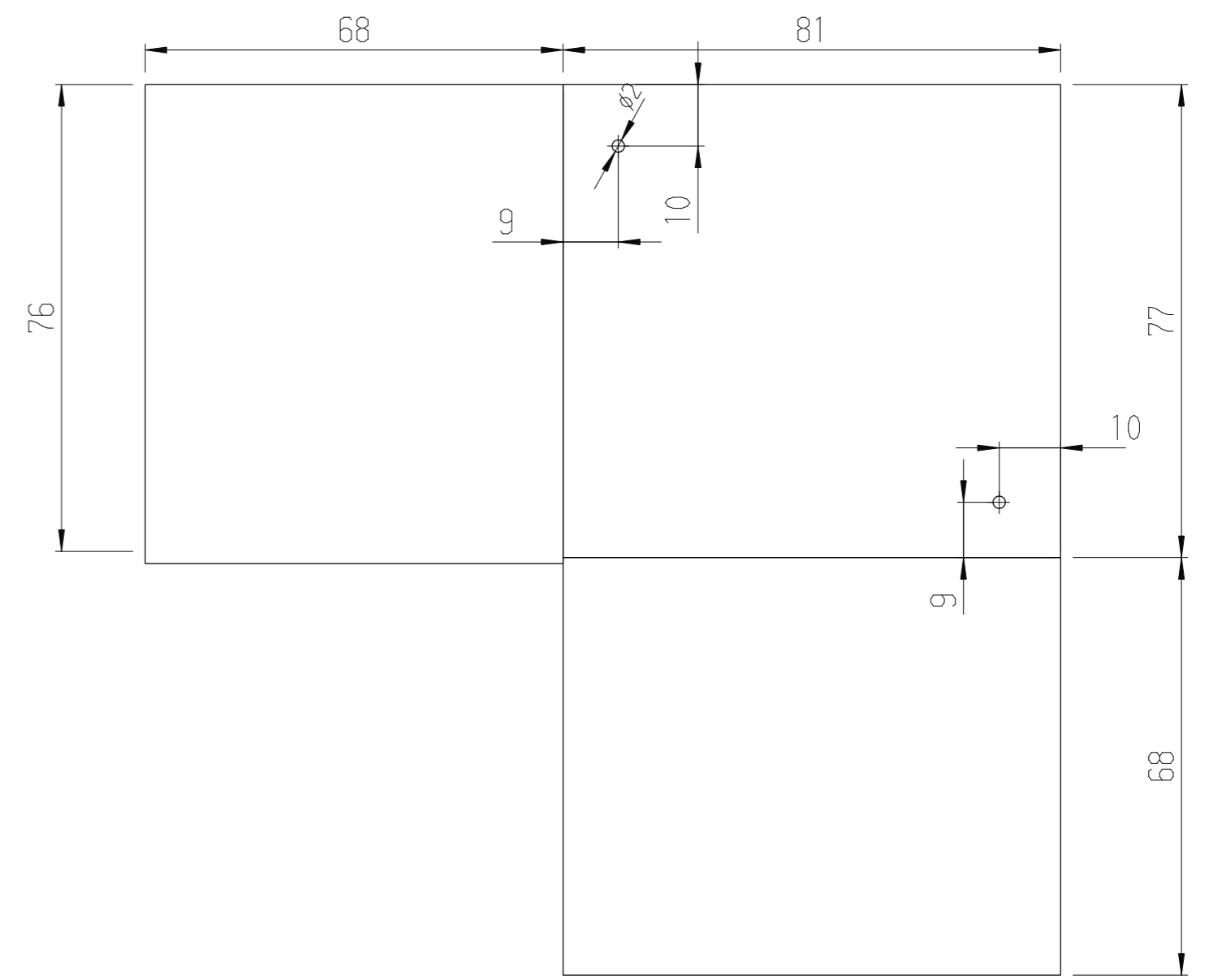
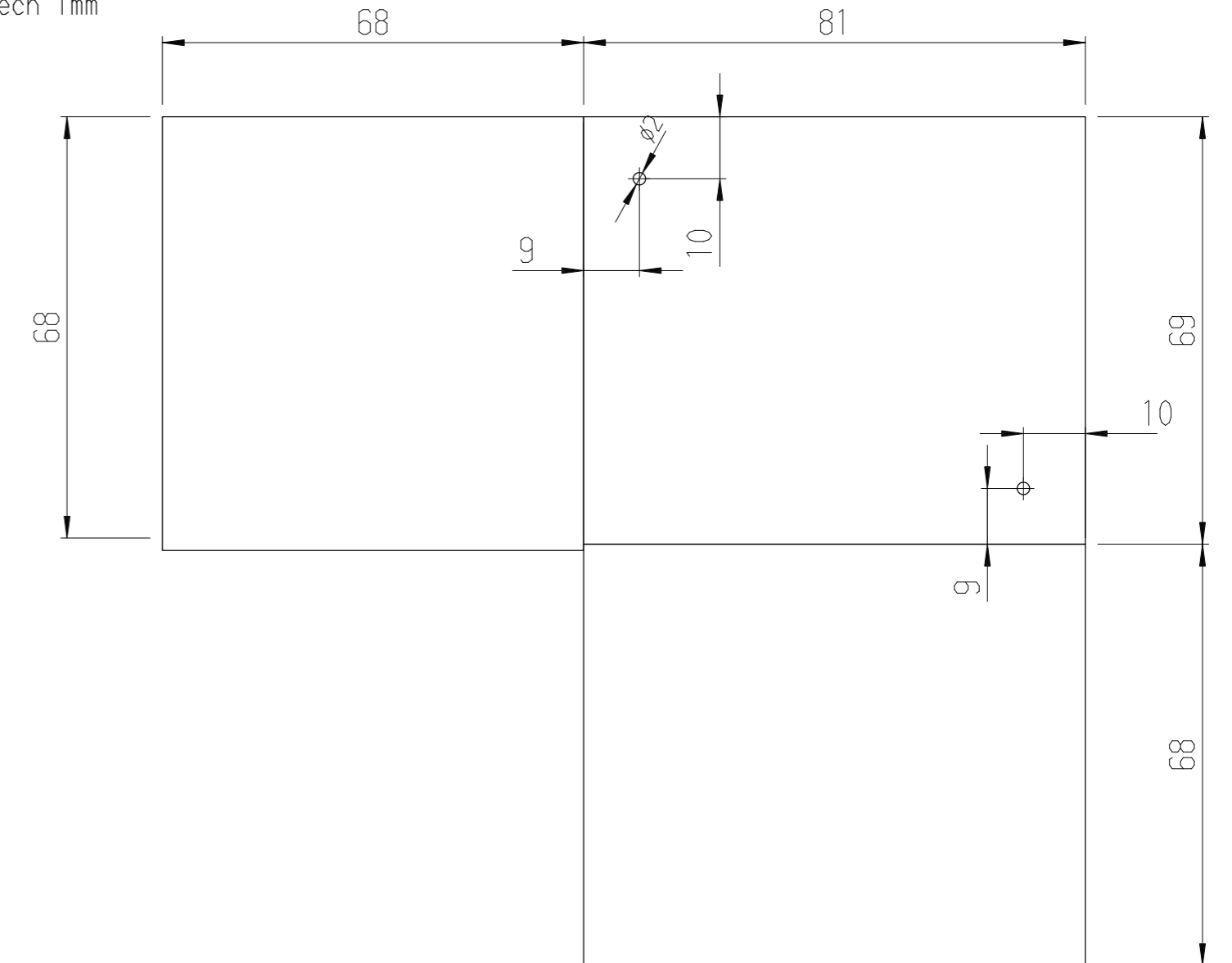
2

1

Änderungs-Index			
REV	Beschreibung	Datum	Freigabe

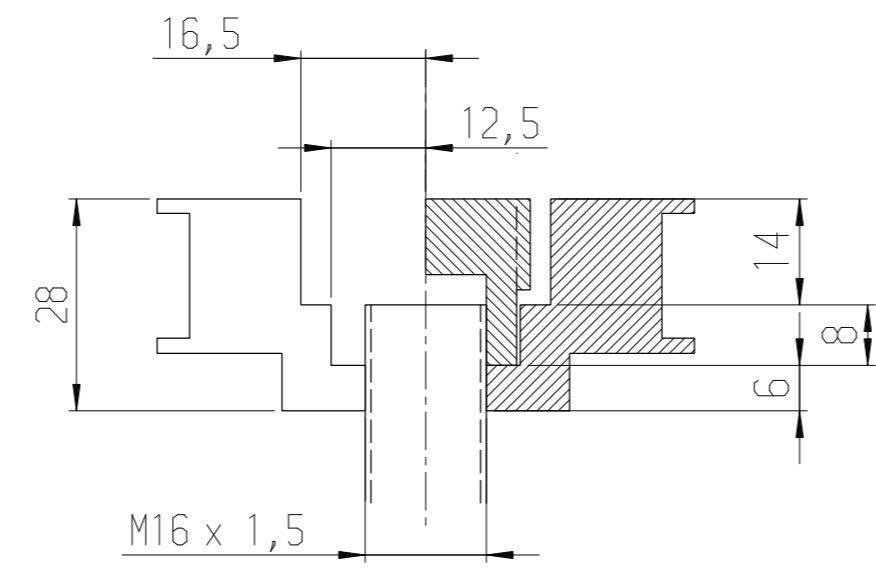
Motorabdeckungen

Stahlblech 1mm



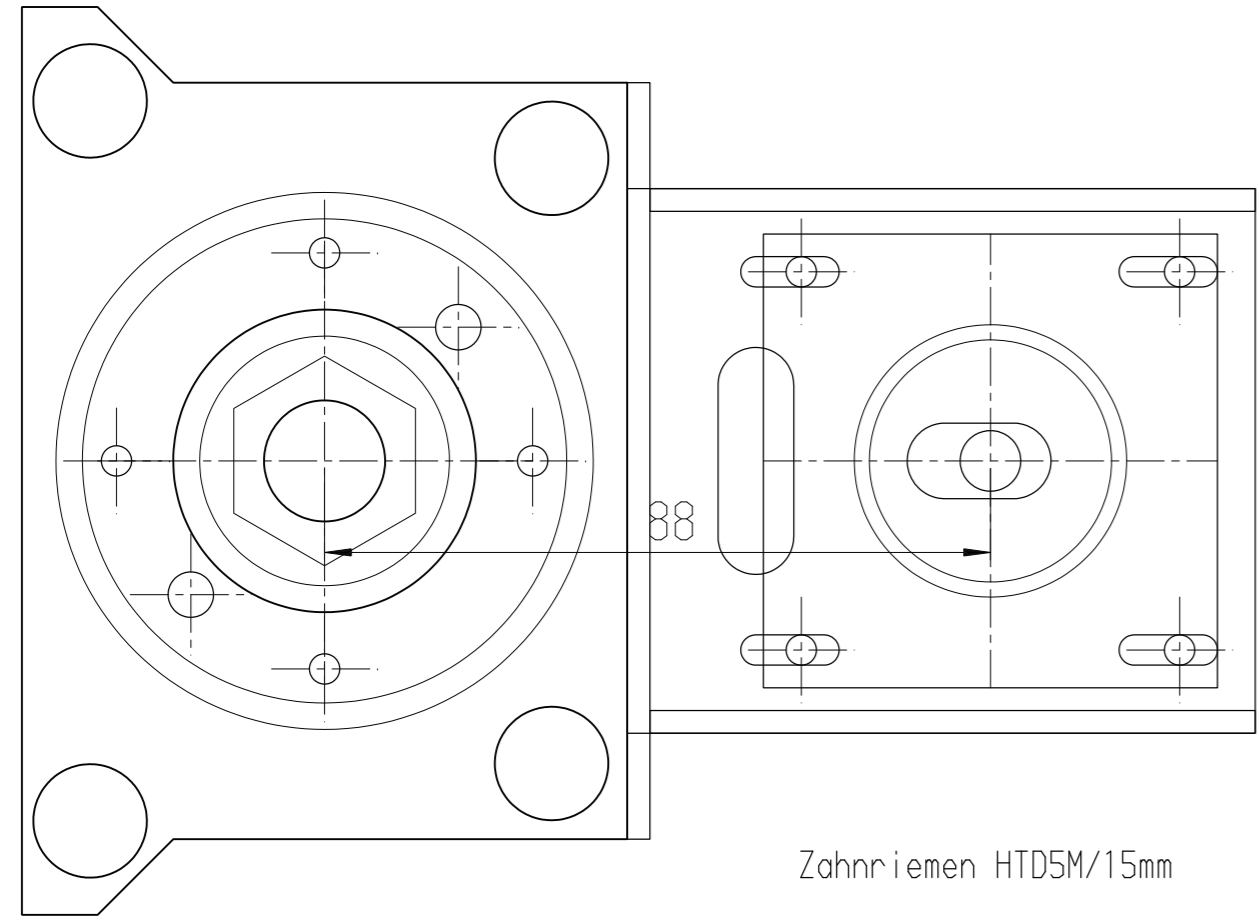
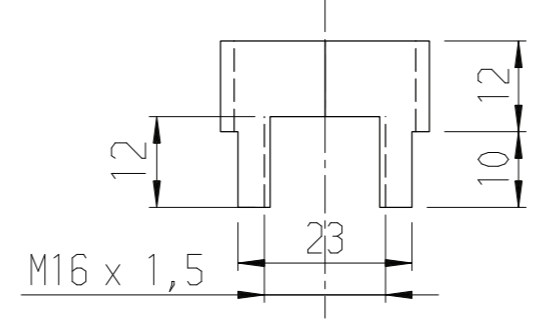
Riemenrad Z-Achse

ausdrehen und Gewinde schneiden



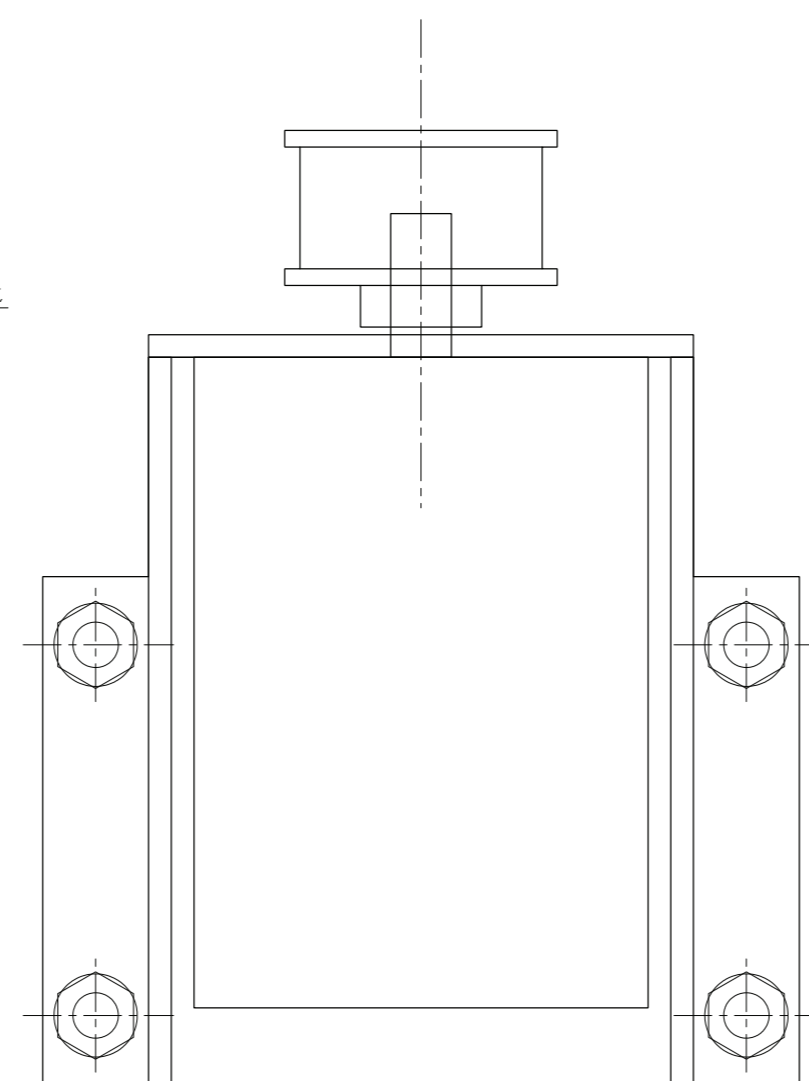
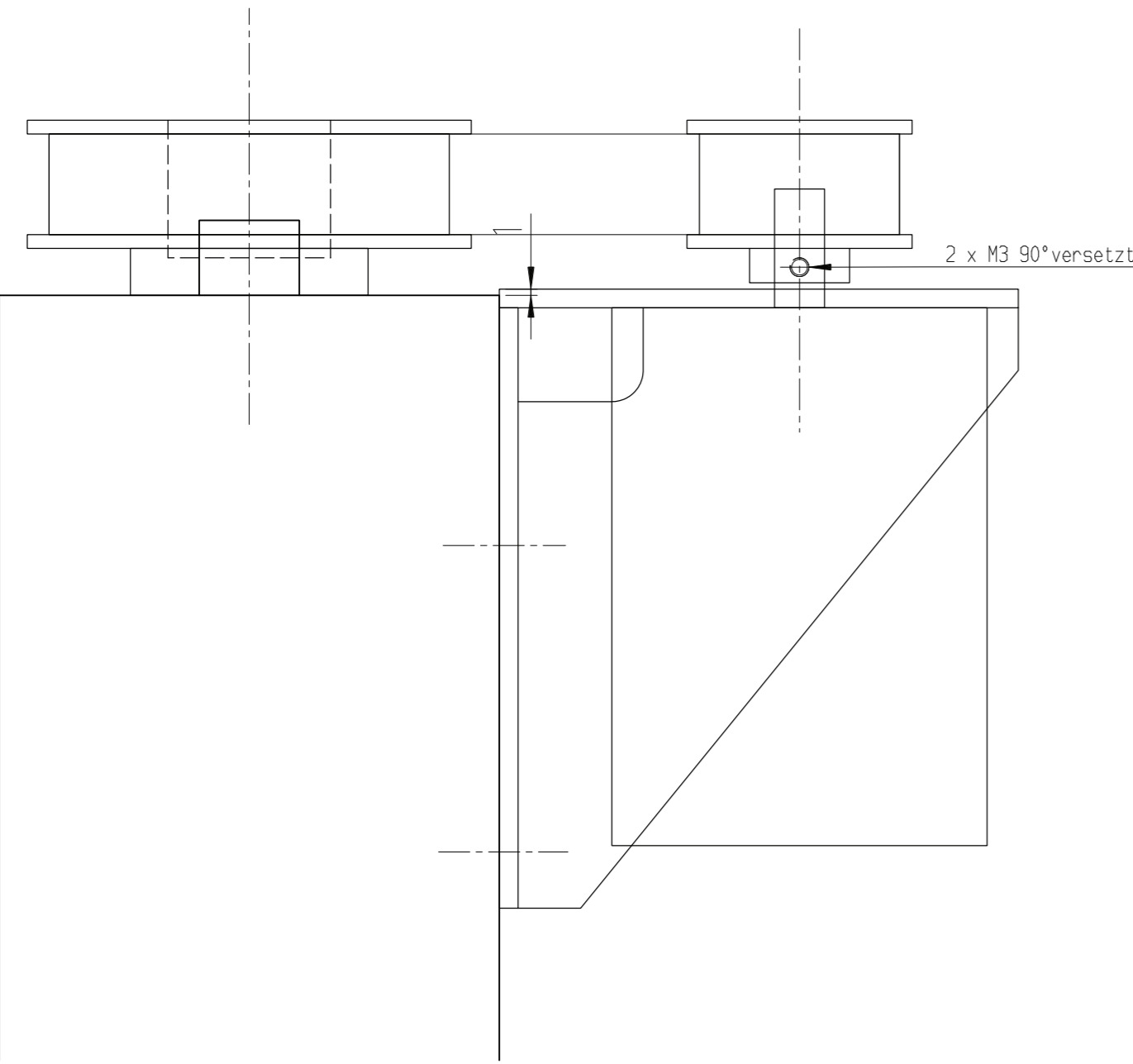
Kontermutter

Stahl SW24



Zahnriemen HTD5M/15mm
 40Z / 20Z, Riemenlänge 330 mm
 Nenn-Achsabstand 88,6 mm

Schrittmotor Sanyo Denki 103-H7823-1740 (www.einfach-cnc.de)



MEDUSA₄		Bezeichnung		CNC-Umbau BF20	
Bearbeiter	S. Brunker	Datum	04-01-2016	PROJEKT	P1
Geprüft		Datum		DWG	Blatt 2
Name		Maßstab	1:	TYPE	M
				Blatt	1 von 1

